

KYTHERA
ISLAND

LITHOGRAPHS

GEORGE
TZANNES

KYTHERA
ISLAND

LITHOGRAPHS

GEORGE
TZANNES

TZANNESART.COM
2020



D

Printmaking 1976 - 1983

In the 1960s, artist George Tzannes began making woodcut prints. Printmaking appealed to him and he liked the idea of multiple originals. After studying lithography at the Pratt Graphics Center he worked at the Printmaking Workshop in New York City, where he experimented with combined printing techniques. In the early 1970s he traveled to Kythera, where he made drawings and watercolor studies used for a series of prints. The works in this catalog are from this period and were published by the Original Print Collectors Group in New York. They were first exhibited in Greece in 1983 at the Ora Gallery in Athens. Like his paintings and drawings, these prints reflect Tzannes's interest in the landscape and architecture of Kythera.



The artist at the Printmaking Workshop in 1982.



WINDOW

Lithograph with Silkscreen 1980

Edition: 100, 43 cm x 43 cm

Apse of the church
at Myrtidia Monastery



DOOR

Lithograph with Silkscreen 1981

Edition: 195, 41 cm x 41 cm

The courtyard and walls of St. Charalambos in Mylopotamos, where old plane trees shade the platia



HORA

Lithograph 1983

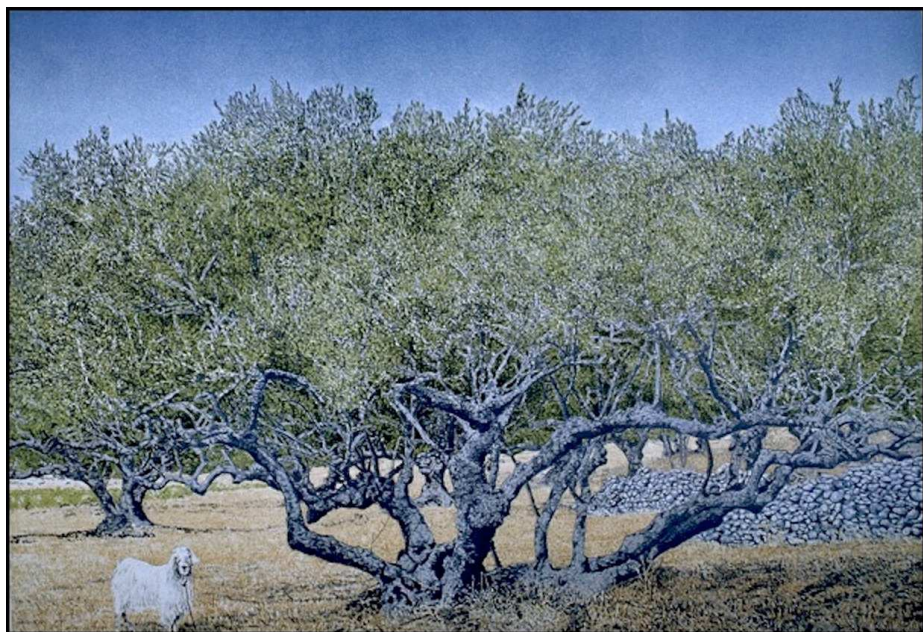
Edition: 150, 51 cm x 41 cm

Antiquity in the
streets and homes of Horta



THE WHITE CITY
Lithograph 1982
Edition: 150, 51 cm x 41 cm

Church tower and
stark white walls of Hora



GOAT AND OLIVE TREE

Lithograph 1979

Edition: 300, 66 cm x 47 cm

In a shaded grove
a goat tethered to an olive tree



GOAT AND FIG TREE
Lithograph with Silkscreen 1977
No Edition, 66 cm x 47.3 cm

In Aroniadika, in a field
with a fig tree, a goat watches



MONASTERY
Lithograph 1982
Edition: 150, 41 cm x 41 cm

Myrtidia Monastery
in a forest of pine trees near the sea



TOWER

Lithograph 1983

Edition: 150, 41 cm x 41 cm

St. Charalambos bell tower
and lemon tree in Mylopotamos platia



TOWER

Lithograph 1982

Edition: 150, 23 cm x 23 cm

Steps behind the church tower
at Myrtidia Monastery



TOWER

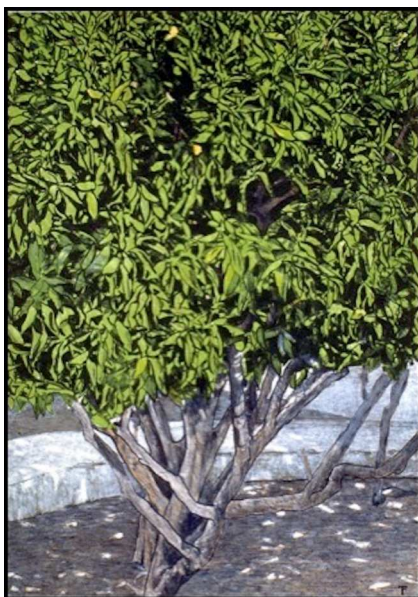
Lithograph 1982

Edition: 150, 23 cm x 23 cm

The tower in the courtyard
of Myrtidia Monastery



WALLS



LEMON TREE

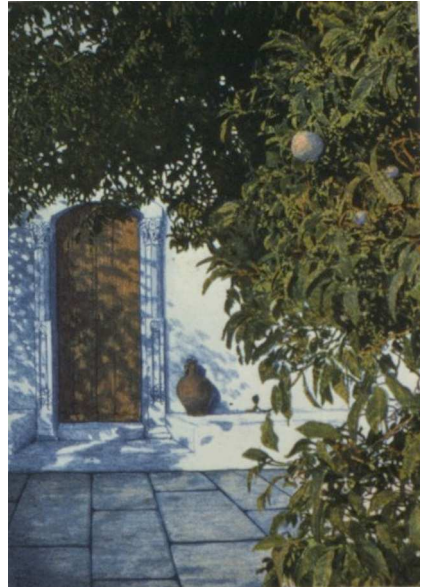
Lithograph 1983

Edition: 125, 13 cm x 18 cm

Milopotamos
Walls of St. Charalambos
A lemon tree in the platia



COURT



COURT

Lithograph 1982
Edition: 150, 13 cm x 18 cm

Myrtidia Monastery
In the courtyard
Steps behind the church

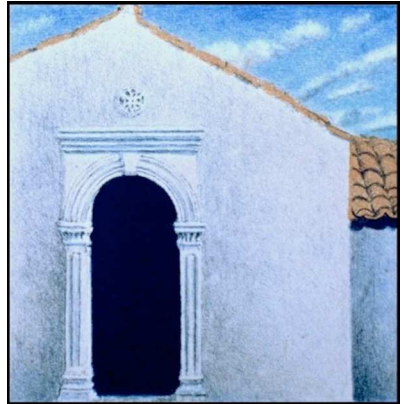


TOWER

Lithograph 1982

Edition: 90, 23 cm x 23 cm

The bell tower of Myrtidia Monastery



ARCHITECTURAL DETAIL SUITE

Lithograph 1982

Edition: 150, 7.5 cm x 7.5 cm

Decorative details on the churches of Kythera



FIELD WITH CYPRESS

Lithograph 1979

Edition: 300, 66.5 cm x 47.5 cm

Cypress trees
make the boundary of a field



FRATSIA

Lithograph 1979

Edition: 300, 66.5 cm x 47.5 cm

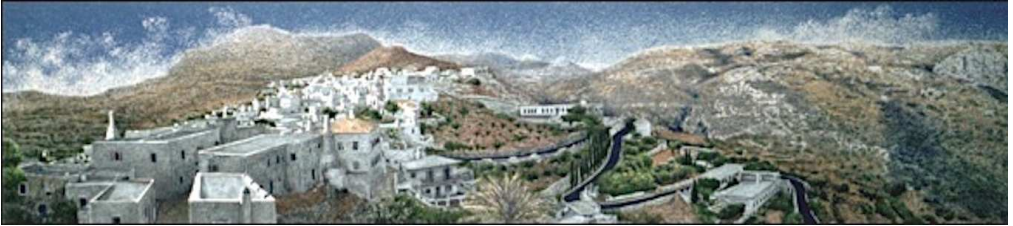
Landscape in Fratsia with
Saint Eleousa in the distance



CAPSALI

Lithograph 1981

Edition: 150, 58 cm x 13 cm



HORA

Lithograph 1981

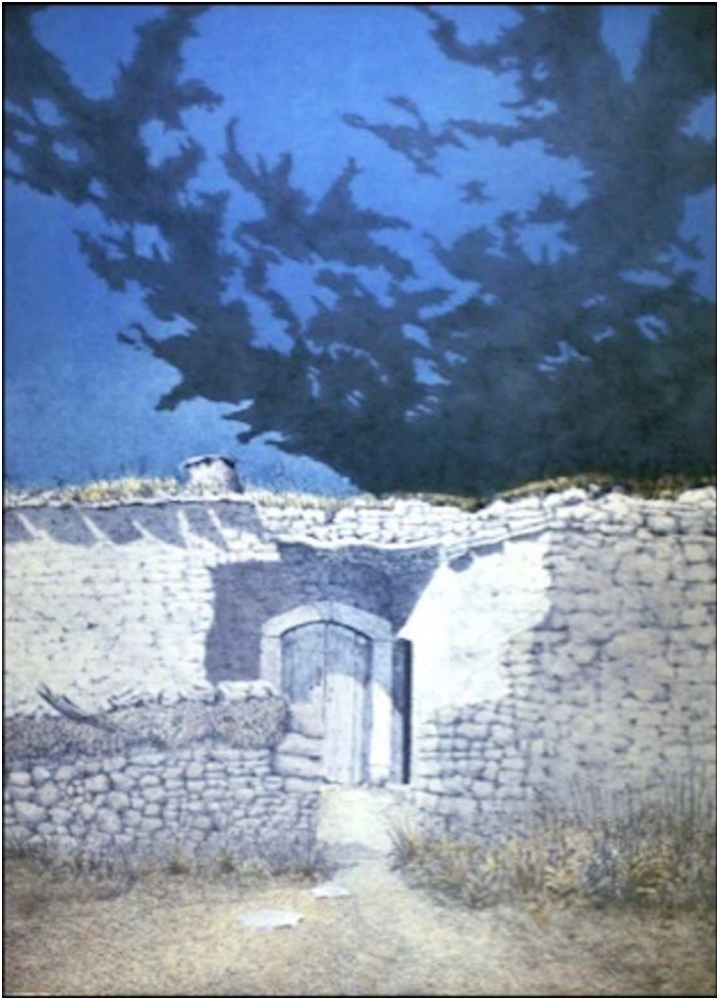
Edition: 150, 58 cm x 13 cm

Capsali bay with the Castle and Hora above
Hora below the Venitian castle



TERRACED MEADOWS
Lithograph with Silkscreen 1976
Edition: 70, 46 cm x 28 cm

Houses in Aroniadika
a goat in the fields



STONE HOUSE

Lithograph 1978

Edition: 200, 41 cm x 51 cm

Light falling on a
ruined stone house in Fratsia

What Are Original Prints?

Art is made in many mediums. An artist may create images in oil paintings, water-colors, drawings, or he may make printed images in limited editions. Printmaking is a medium that enables many people to own and enjoy the same work of art.

An original print starts with a master design or drawing on a suitable medium, such as a metal plate or a flat stone, which can be inked and printed to produce a quantity of identical multi-originals, or prints. Each color is printed from a different master on separate stones or plates. The finished print is produced in a numbered limited edition signed by the artist, each one an original work of art.

Lithography is a method of surface printing. An image is drawn on a flat, smooth limestone slab. The stone is inked and the image is transferred to a sheet of paper by a special printing press.

Silkscreen prints use a stencil technique. An image is made on silk stretched over a wooden frame. Ink is applied through the stencil, transferring the image onto paper.

All printing techniques require a complex proofing procedure. Several proofs, or trial prints (TP), are made before the artist creates the final printed image. Then, several signed artist's proofs (AP) of the final image are made. If a numbered limited edition is not made, only the trial proofs and artist's proofs exist.



Kythera Island

The Art of George Tzannes

Kythera Island in Greece has been the subject of Tzannes' work for five decades. He currently lives and works in New York City, where he was born, and on Kythera, where his father was born. Tzannes' art is expressed through painting, drawing, monotype, and sculpture. This catalog features original limited-edition lithographs made from 1976 to 1983. Tzannes depicts subjects found in Kytherian landscape and architecture as well as artifacts from the recent and ancient past. He continues to explore the island with new interpretations of familiar subjects.